

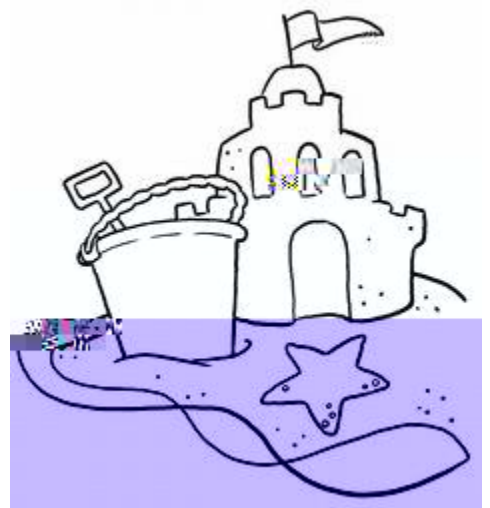
Poetry Differentiation Station

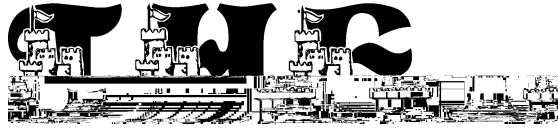
Cubing Strategy Teacher Directions

Cubing is an instructional strategy that asks students to consider a concept from a variety of different perspectives. The cubes are six-sided figures that have a different activity on each side of the cube. A student rolls the cube and does the activity



1. Read the poem, "The Sandcastle."
2. Select your color cube.
3. Roll the cube.
4. Using the side the cube landed on, read the activity.
5. Complete the activity on the response sheet.
6. Repeat directions 2-5, # _____ times.





We're going to the beach, to the playground near the sea.
To the sandbox near the fountain, beneath the big palm tree.
The perfect site for best-friend fun, the spot for you and me.
Here, we'll build a mighty castle on the playground near the sea.

Let's fill a bucket with water and pour it on the land.
To make the sand muddy and damp, to work with it by hand.
Now pile the sand up in the center—as much as your fingers can.

Level 1

Green

<p>2. Using the poem, "Sandcastle" select one line from the poem that best helps the reader visualize the sand castle. Explain</p>	<p>3. If your poet were an artist, how would he/she express this poem as a picture? Use markers, pencils, etc. to illustrate your answer.</p>	<p>4. Identify the structure to the poem. Does the poem have a specific pattern?</p>
--	---	--

Level 2

Pink

1. Make two text-to-self connections to the poem.

2. Using the poem, "Sandcastle" select two lines from the poem that best helps the reader visualize the sand castle. Explain why you selected those two lines.

3. I illustrate the setting of the poem. Use color and give your picture a title that is connected to the poem, but not the title of the poem. Explain why you selected the title.

4. I identify the structure to the poem. Explain how this helps the reader identify what type of poem it is?

5. Explain why lines 1 through 4 are important to the poem.

6. The poet describes his or her experience building a sandcastle. Write a rhyming poem about another activity done at the beach.

For extra durability:
Print and laminate.
Cut out cube
template along the
lines. Fold the tabs
and form the cube

Level 3

Yellow

1. Choose two different ways to make a connection to the text: text-to-self, text-to-text, or text-to-world.

2. Using the poem, "Sandcastle" select three lines from the poem that help the reader visualize the sand castle. Rank the lines from best to worst on visualization and explain your ranking system.

3. Illustrate the setting of your poem, Use color and give your picture a title that is connected to the poem but not the title of the poem. Explain why you selected the title in exactly 15 words.

4. I identify the structure to the poem. Explain how this helps the reader identify what type of poem it is. Try to write another stanza to the poem using the same the structure.

5. Explain how the poem would change if lines 1 through 4 were deleted

6. The poet describes his or her experience building a sandcastle. Write a haiku poem about another activity done at the beach.

For extra durability:
Print and laminate.
Cut out cube
template along the
lines. Fold the tabs
and form the cube.
Glue or tape the tabs
together.

Poetry Response Sheet

Number Rolled	Response

Poetry Response Sheet

Thanks for purchasing!!!

If you have any questions, please feel
free to send me an email:

acdodson10@yahoo.com